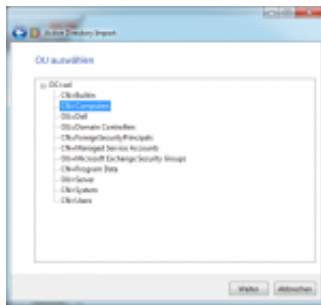


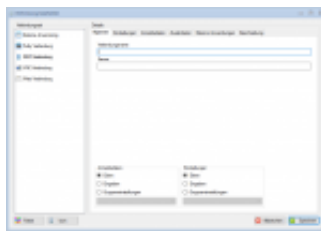
Screenshots

-



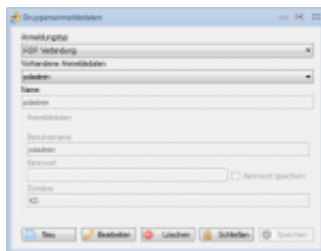
Active Directory Import

-



Neue Verbindung anlegen

-



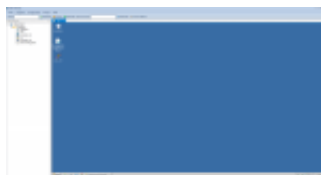
Gruppen - Anmeldedaten

-



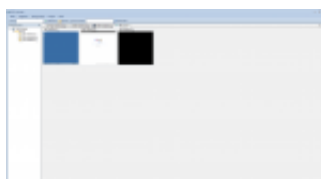
Gruppen - Einstellungen

-



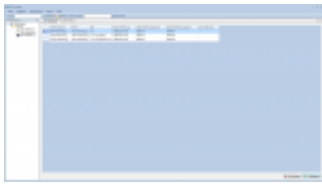
Offene Verbindungen

-



Verbindungsübersicht

-



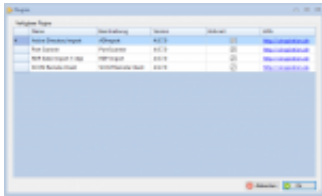
Serverlog

•



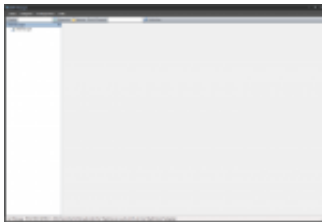
Optionsdialog

•



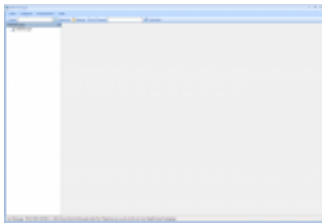
Pluginssystem

•



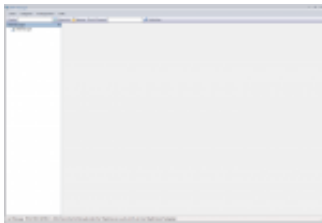
Office 2007 Black

•



Office 2007 Blue

•



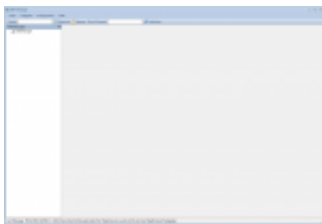
Office 2007 Silver

•



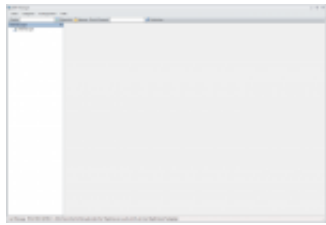
Office 2010 Black

•



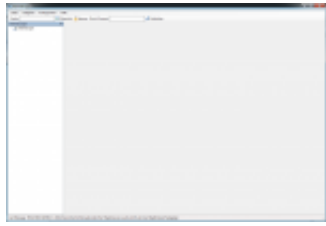
Office 2010 Blue

•



Office 2010 Silver

•



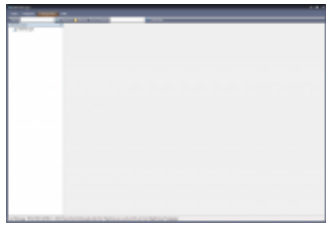
Professional System

•



Sparkle Blue

•



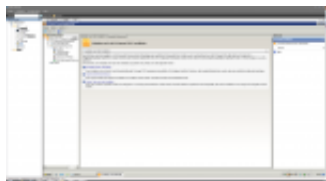
Sparkle Orange

•



Sparkle Purple

•



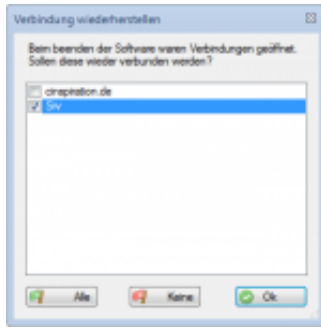
Hauptfenster mit geöffneter Verbindung

•



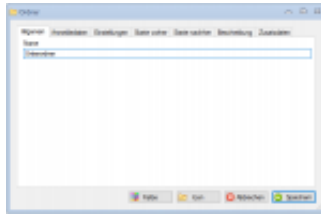
Hauptfenster mit zwei Verbindungen im Splitscreen

•



Verbindung beim Start wiederherstellen

•



Ordner anlegen

•



Einrichtungsassistent